



LAS LOMAS
DEL HIGUERÓN
by TOP GESTIÓN

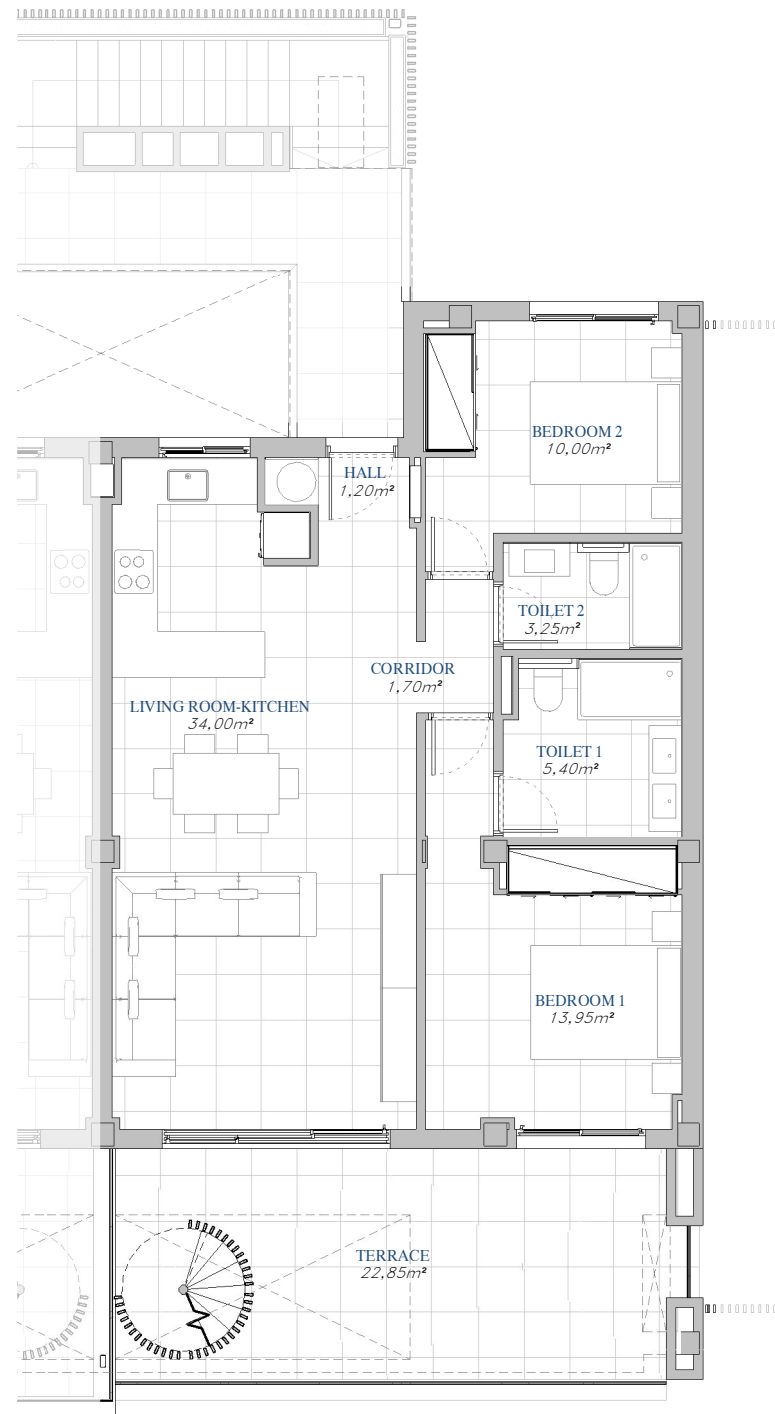
PENTHOUSE

2 BEDROOMS

SECOND FLOOR



SITE PLAN



"This plan may be modified according to the development of the Execution Project and the construction. It does not constitute a contractual document. The reflected furnishing is for decoration purposes only. The Project Management reserves the right to make the necessary changes for functional, esthetic and legal reasons that may occur, without implying a decrease in the quality of the construction".

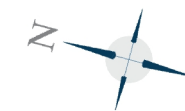
TOTAL USEFUL AREA:
158,05 m²

TOTAL USEFUL AREA:
ACCORDING TO RD 218/2005
76,45 m²

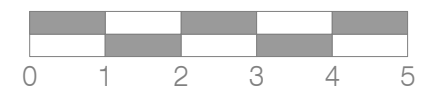
BUILT AREA

Living Area	81,45 m ²
Terrace	99,75 m ²

TOTAL BUILT AREA: 181,20 m²



GRAPHIC SCALE



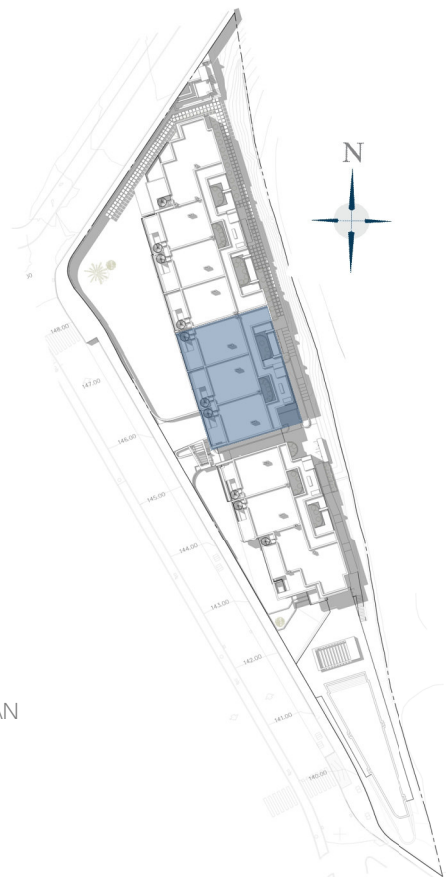


LAS LOMAS
DEL HIGUERÓN
by TOP GESTIÓN

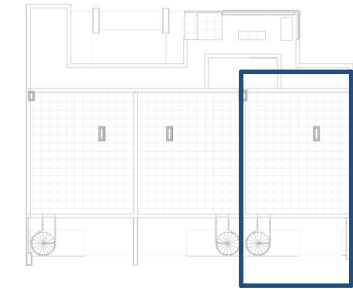
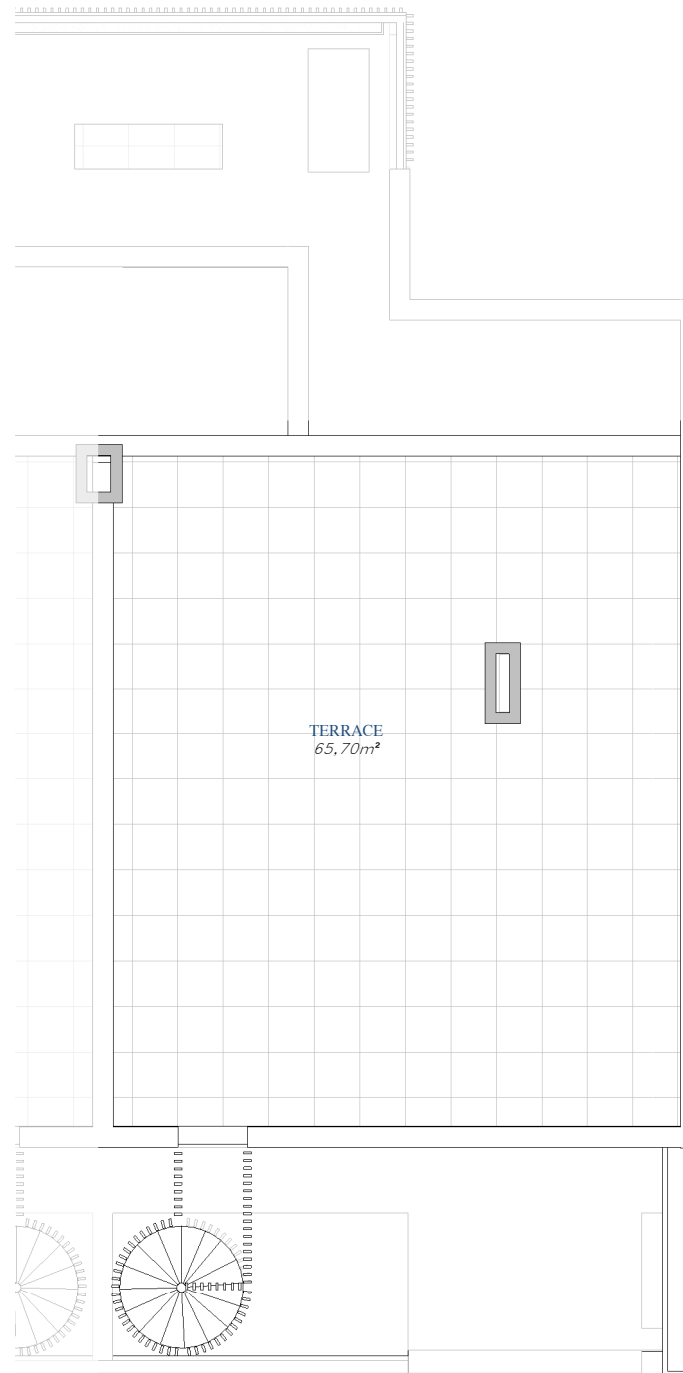
PENTHOUSE

2 BEDROOMS

SOLARIUM



SITE PLAN



"This plan may be modified according to the development of the Execution Project and the construction. It does not constitute a contractual document. The reflected furnishing is for decoration purposes only. The Project Management reserves the right to make the necessary changes for functional, esthetic and legal reasons that may occur, without implying a decrease in the quality of the construction".

TOTAL USEFUL AREA:
158,05 m²

TOTAL USEFUL AREA:
ACCORDING TO RD 218/2005
76,45 m²

BUILT AREA

Living Area	81,45 m ²
Terrace	99,75 m ²

TOTAL BUILT AREA: 181,20 m²



GRAPHIC SCALE

